



# Texture-Top™

## Data Sheet



Part # TXT

**DESCRIPTION:** Concrete Solutions® Texture-Top™ overlay is a just-add-water, polymer modified coating designed to provide an attractive, decorative, slip-resistant finish commonly used on pool decks, patios, driveways, walkways, etc. Texture-Top can be sprayed using a compressor and hopper gun unit to produce a spray-texture/trowel knockdown finish. It can also be applied by hand trowel or gauge rake at 1/8" (3.2 mm) thick and stamped with texture skins for a beautiful stone or brick finish used for bands, borders, and small areas. For video instructions, scan the QR on the data sheet or visit the following link – [www.concretesolutions.com/texture-top](http://www.concretesolutions.com/texture-top).

**TYPICAL USES:** Driveways, sidewalks, walkways, patios, pool decks, pedestrian bridges, etc.

### FEATURES & BENEFITS:

- For application over existing concrete and other sound surfaces
- Excellent for pool decks, walkways, driveways, patios, etc.
- Can be integrally colored, stained, or color sealed
- Easy to use, no curing agent required
- Durable, flexible, high bond strength
- Can be used for 1/8" stamped borders, bands and accent pieces

### CHEMICAL PROPERTIES:

Coverage Rate per Bag Mix	150 sqft (13.9 sm)
---------------------------	--------------------

**MOISTURE VAPOR TESTING:** All concrete floors not poured over a proper moisture barrier are subject to possible moisture vapor transmission or hydrostatic pressure problems. These problems can cause a coating system to blister or fail. Before applying a coating system over a concrete floor which is on-grade or below grade, a moisture test is recommended to ensure that moisture content meets industry recommended standards.

**SURFACE PREPARATION:** Surface Preparation is often the most important part of a successful coating or resurfacing application. Surface must be clean, sound, and free from oil, dirt, waxes, or any other contaminant that may interfere with bonding. Popular methods of surface preparation include grinding, shotblasting, and/or scrubbing with detergent, acid etching, neutralizing, and pressure washing. The type of surface preparation needed will depend on the condition of the substrate to be repaired, resurfaced, textured, stamped, colorcoated and/or sealed. **For commercial and industrial indoor jobs**, grinding is required to prepare the surface. **For residential indoor jobs**, scrubbing with detergent, acid washing, neutralizing, rinsing and wet/dry vacuuming is recommended. **For most outdoor jobs**, the surface can be cleaned by detergent scrubbing, acid washing and pressure washing. The following is a step-by-step procedure.

**1. Protect the walls** with tape and plastic before scrubbing or rinsing.

**2. Scrub and rinse the floors.** First dampen the surface with water in 100 to 200 sq. ft. sections at a time using a water hose. Using the floor polisher machine, scrub the dampened surface with a strong detergent (such as Simple Green) diluted 2 to 1 or 5 to 1 with water. For oil spots use straight detergent with no dilution. While scrubbing, use a water hose and trigger gun nozzle to clean the surface behind the floor polisher. For large open areas such as a warehouse floors, etc., a 3000 psi (or higher) pressure washer with a 15 degree or spinner tip on the end of the gun can be used to clean behind the floor polisher. Rinse immediately behind the floor polisher, so the residue does not dry on the surface. Use a rubber squeegee and/or broom to keep the dirty water from running back into the rinsed clean areas. **Use a wet/dry vacuum** (one or more depending on the size of the job) to remove the dirty water and detergent from the surface. The persons scrubbing, rinsing, squeegeeing and vacuuming should all work closely together doing a section at a time. After rinsing the surface clean, check the oil spots by rubbing them with a white rag. If the rag gets dirty, it will need to be scrubbed with a heavy duty detergent using a floor polisher machine and then rinsed clean prior to using a grinder.

**3. If the surface is coated with a paint or sealer**, it will be necessary to remove the coating using a paint stripper, sandblaster, shotblaster or surface grinder. If a shotblaster is used, a dustless grinder can be used to clean the edges where the shotblaster cannot reach.

**4. Open the concrete pores.** Acid washing is recommended to etch a concrete surface when grinding, shot-blasting or sandblasting is not possible or unavailable. Opening the concrete pores allows the coating material to get good adhesion or bite into the substrate. Always wear the appropriate safety protection. The proper procedure to acid wash a concrete surface is as follows:

- a. Mix a solution in a 5 gallon pail consisting of 4 parts water and 1 part muriatic, hydrochloric or phosphoric acid. **ALWAYS ADD THE ACID TO THE WATER FOR SAFETY AND TO AVOID SPLATTERING.**
- b. Dampen the surface with water (no puddles) before applying the acid solution.

- c. Pour or spray the acid solution onto the dampened concrete surface. When spraying, use an acid-resistant pump-up sprayer.
- d. Scrub the acid solution evenly over the surface using an acid-resistant broom. Allow the acid solution to sit on the surface and work for 3 – 5 minutes etching the concrete. Do not allow any areas on the concrete to dry during the etching process. If this occurs, spray more water or acid solution to keep the surface wet.
- e. Once the acid solution stops fizzing, spray a solution of 10 parts water and 1 part household ammonia onto the acid solution to increase the pH and neutralize it prior to rinsing.
- f. Thoroughly rinse any acid residue off the concrete surface using a pressure washer. Pre-wet any surfaces the acid solution will be rinsed over. If indoors, rinse with water a section at a time and remove the water and acid solution with a wet/dry vacuum.

**CRACK & JOINT REPAIR:** Structural moving cracks should be repaired/treated with Concrete Solutions Crack Repair System prior to applying Texture-Top or any Concrete Solutions polymer concrete products. Please refer to Concrete Solutions Crack Repair Instructions for the complete and detailed procedure.

**PRODUCTS AND TOOLS NEEDED**

Application Steps	Product Name	Coverage Rate/Gallon	Tools for Application
Apply a Bond Coat of Polymer Concrete	Resurfacer	250 sqft per bag mix	<ul style="list-style-type: none"> <li>• 24" metal squeegee</li> <li>• hand trowel</li> </ul>
Apply a Trowel Knockdown Finish of Polymer Concrete	Texture-Top	150 sqft per bag mix	<ul style="list-style-type: none"> <li>• compressor and hopper gun unit</li> <li>• hand trowel</li> <li>• wet rag</li> <li>• spiked shoes</li> </ul>
Apply a First Coat of Concrete Colorcoat	Concrete Colorcoat	300 sqft per gallon of Concrete Colorcoat	<ul style="list-style-type: none"> <li>• 9" or 18" 3/4" nap paint roller</li> </ul>
Apply a Second Coat of Concrete Colorcoat	Concrete Colorcoat	300 sqft per gallon of Concrete Colorcoat	<ul style="list-style-type: none"> <li>• 9" or 18" 3/4" nap paint roller</li> </ul>
Option: Apply one or two coats of Sealcoat 1000	Sealcoat 1000	300 – 400 sqft per gallon	<ul style="list-style-type: none"> <li>• pump-up or airless sprayer</li> <li>• 1/2 – 3/4" nap paint roller</li> <li>• paint strainer</li> </ul>

**MIXING INSTRUCTIONS:** Using a drill mixer, mix the entire bag of Texture-Top with 1.25 gallons (4.7 liters) of water for 3 – 5 minutes. For colors, add 1 Concrete Solutions Integral Color Pak per Texture-Top bag mix. For smaller batches, mix by volume 1 part water to 3 parts Texture-Top. Water can be adjusted slightly for desired consistency. To mix your own spray-texture mix, please refer to the Polymer Mixing & Coverage Charts.

**APPLICATION INSTRUCTIONS:** It is recommended to first apply a thin Bond Coat of Concrete Solutions Resurfacer and allow to dry prior to the application of Texture-Top. Mask off areas to prevent over spray or a cardboard shield can be used. After Texture-Top is applied, sealing with Concrete Colorcoat is recommended. If using Concrete Colorcoat, it is best to pigment the Resurfacer with Concrete Solutions Integral Color Powder the same color as the Concrete Colorcoat that will be used. For extra stain resistance or on driveways, apply a topcoat seal of Sealcoat 1000 clear. Texture-Top can also be sealed with Stamped Concrete Sealer or Acrylic Urethane.



Apply a Bond Coat/Resurfacer using a 24" metal edge squeegee.



Spray the Spray Texture Mix over the surface using hopper gun spray unit.

**Spray-Texture/Trowel Knockdown Finish** – Lightly mist the inside of the hopper gun with water. Pour mixed Texture-Top into the hopper gun. Use the second or third largest hole near the tip of the sprayer and set the air pressure between 3 – 15 psi. Spray Texture-Top on a piece of cardboard or plastic to test size and quantity of droplets. Adjust the air pressure and hopper gun tip size to achieve desired spray pattern. If necessary adjust the tip size, the consistency of the mix (by adding more polymer and water or sand), and the air pressure until you achieve the spray pattern desired. It is important to keep fresh batches of material mixed up so the person spraying and troweling do not have to wait or a seam line may be noticeable where you stop and start. If you need to stop somewhere, always stop next to a joint so you can begin again on the opposite side of the joint later. Be careful to protect the finished edge from over spray. To help keep a mix fresh longer especially on hot days, it is recom-

mended to add 1 or 2 ounces of the Concrete Solutions Polymer Concrete Retarder to the mix. (See the Concrete Solutions Products Price List for coverage rates and mixing ratios.)

After 5 – 10 minutes following the application, or sooner in warmer temperatures, while wearing spiked shoes use a hand trowel or metal squeegee to flatten the droplets. If you trowel it too soon you can create large smooth areas, referred to as “pancakes”, from the material being too wet. By allowing the material to set up to where it is not too wet and not too dry you will achieve a more even texture. The person troweling should keep a damp cloth in one hand to periodically wipe the bottom of the trowel clean. After desired finish is achieved, allow to dry for at least four hours or until completely dry, and seal with two coats of a recommended Concrete Solutions sealer. If desired, two coats of Concrete Solutions Concrete Colorcoat can be used as a sealer to provide a more uniform color throughout.

**WHAT TO DO WITH EXPANSION JOINTS**

Immediately after the Bond Coat and also the Spray Texture Finish applications dry to touch (within 30 minutes to one hour) it is important to walk around the surface and cut back open any expansion joints that were filled with the polymer cement. The material in the joints will be thicker so it will take longer to dry than up on the surface. It is best to remove the excess material when it is not too wet. The polymer concrete in the joints will get to a stage between wet and dry when it is like dampened dirt and can easily be scraped out using a trowel or stand up scraper. Clean all the material out of the joints back to the original edges, then swept up the excess and throw it away. If the material in the joints dries too hard the joints will have to be saw cut back open all the way through using a skil saw and a diamond blade. If any material is left touching in between the joints delamination can occur next to the joints later on. (See picture #4.)

**APPLYING CONCRETE COLORCOAT**

When the Spray Texture has dried (usually within 2 – 4 hours) scrape gently over the surface and power blow to remove any rough edges before applying two coats of the Concrete Solutions Concrete Colorcoat. The Concrete Colorcoat should be applied over the Spray Texture using a 3/4" nap 9" – 18" paint roller. Apply both coats undiluted to achieve the best color uniformity and stain resistance. The coverage rate is approximately 300 sq. ft. per gallon per coat. (See the Concrete Solutions Concrete Colorcoat Technical Data Sheet).

**APPLYING SEALCOAT 1000**

For driveways or areas that will receive vehicular traffic, it is recommended to apply 1 – 2 coats of Concrete Solutions Sealcoat 1000 as a topcoat sealer. For pool decks Concrete Colorcoat can be left unsealed if desired.

The best method to apply Sealcoat 1000 over the Spray Texture, is to spray a thin coat of sealer using a pump-up sprayer, followed by a 1/2 – 3/4" nap roller to leave a thin, even coat. Using this method the coverage rate should be 400 sq. ft. per gallon. Pour the sealer through a paint strainer before spraying to prevent the tip from clogging.



1. Spray the Spray Texture Mix at a 75 – 80% coverage rate to achieve an even textured profile.



2. Mask off surrounding areas to prevent over spray or use a cardboard shield next to the edges.



3. While wearing spiked shoes knock the spray texture down flat before it dries using a trowel.



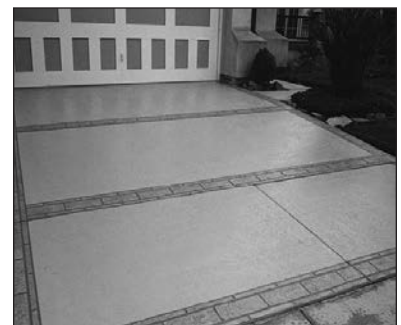
4. Scrape out any material that got in the joints using a trowel or scraper before it dries too hard.



5. After blowing off the surface, apply two coats of Concrete Colorcoat with a paint roller.



Decorative borders or stencil patterns can be applied to enhance the appearance of the Spray Texture Finish.



Texture-Top with 1/8" stamped border

**1/8" (3.2 mm) Stamped Texture** – Stencils or grout tape can be applied over the Resurfacer to create border or accent designs. Tightly trowel the Texture-Top over the stenciled/taped concrete to break the surface tension, and then spread the Texture-Top at a thickness between 1/16 – 1/8" (1.6 – 3.2 mm). Let it sit for 10 – 25 minutes then spray Concrete Solutions Liquid Release Agent over the surface and stamp with stone or brick texture skins. Concrete Solutions Antique Release Powder can be added to Liquid Release Agent to give natural stone color variations. For cleaner grout lines, pull tape/stencils shortly after stamping. Seal the 1/8" stamped applications with two coats of Concrete Solutions Stamped Concrete Sealer or Acrylic Urethane. To learn more please attend our monthly training class in Las Vegas.



Texture-Top with Brick Border Design



Texture-Top with Tile Border Design

**HOW SUPPLIED:** Texture-Top is packaged in 50 lbs (22.7 kg) bags.

**SAFETY PRECAUTIONS: Health Considerations: Consult the Rhino Linings® Safety Data Sheets (SDS)**

Chemical systems require the use of proper safety equipment and procedures. Please follow the Rhino Linings® product SDS and Safety Manual for detailed information and handling guidelines.

**For Your Protection:** The information and recommendations in this publication are, to the best of our knowledge, reliable. Suggestions made concerning the products and their uses, applications, storage and handling are only the opinion of Rhino Linings Corporation. Users should conduct their own tests to determine the suitability of these products for their own particular purposes and of the storage and handling methods herein suggested. The toxicity and risk characteristics of products made by Rhino Linings Corporation will necessarily differ from the toxicity and risk characteristics developed when such products are used with other materials during a manufacturing process. The resulting risk characteristics should be determined and made known to ultimate end-users and processors.

Because of numerous factors affecting results, **Rhino Linings Corporation makes no warranty of any kind, express or implied**, other than that the material conforms to its applicable current Standard Specifications. Rhino Linings Corporation hereby disclaims any and all other warranties, including but not limited to those of merchantability or fitness for a particular purpose. No statements made herein may be construed as a representation or warranty. The liability of Rhino Linings Corporation for any claims arising from or sounding in breach of warranty, negligence, strict liability, or otherwise shall be limited to the purchase price of the material.

©2014 Rhino Linings Corporation. All rights reserved.



Concrete Solutions by Rhino Linings  
 7455 Carroll Road, San Diego, CA 92121  
 1-800-232-8311 • Fax 858-566-4346  
 www.concretesolutions.com



Texture-Top How-to Video  
[concretesolutions.com/texture-top](http://concretesolutions.com/texture-top)